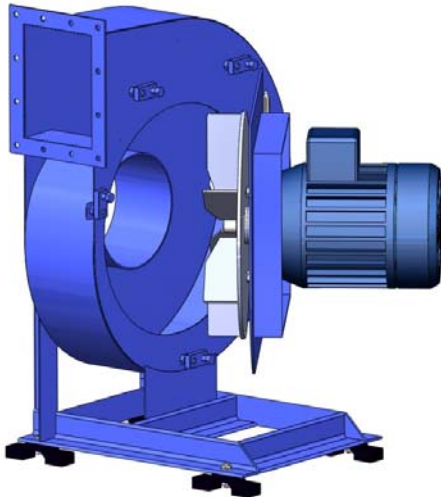


Flue gas and transportation fan MT Arr.4 SWING OUT



The MT fans are specially designed to meet the requirements of an industrial fan. With a SWING-OUT hatch it is easy to inspect and clean the fan for dirt inside the fan house and on the rotor.

The capacity range for a directly driven version is from 50 m³/h to 7000 m³/h and the fans are suitable for flue gas, exhaust, dusty air, and transportation of sawdust. In the standard version the fans are primed and painted, but we can also deliver versions treated with epoxy, galvanized, in stainless steel or acid proof metal. Extra equipment is extra equipment as flexible connections, vibration dampers, drain plug, spark protection, etc.

Dimensions sketch

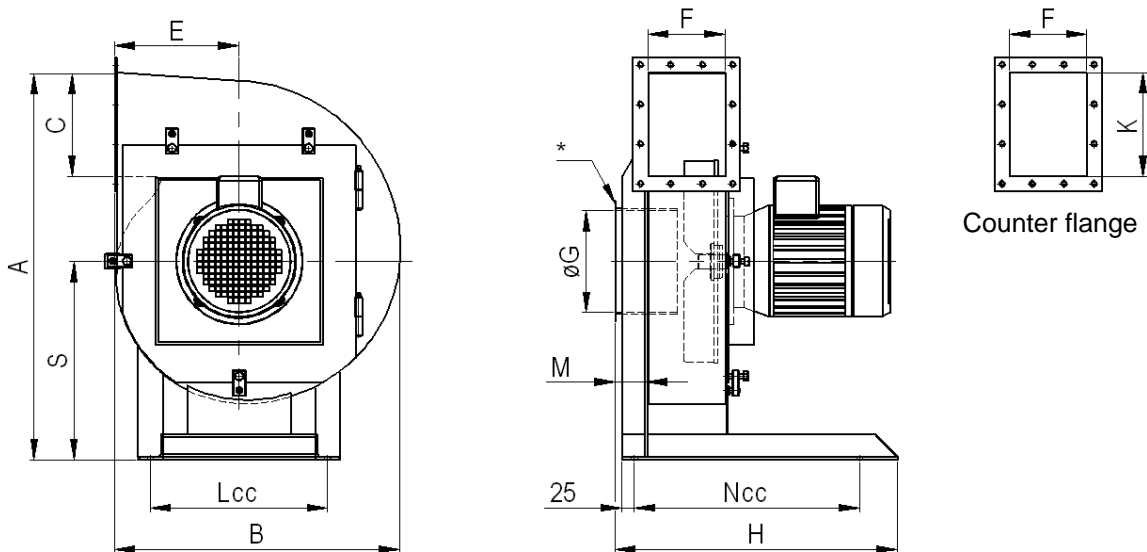


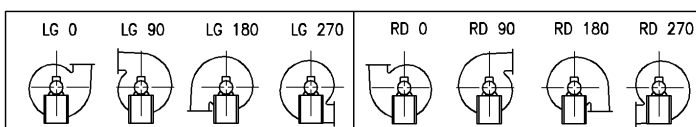
Table of dimensions.

*Flange on the inlet is standard as of str. 250

Type	A	B	C	E	F	øG	H	K	Lcc	M	Ncc	S	Vekt, kg
75	-	290	78	127	65	75	-	80	-	40	-	-	8
100	457	336	105	148	75	100	~380	107	205	50	305	241	20
125	529	395	127	173	95	125	~430	129	230	50	330	275	25
150	597	448	152	195	115	150	~480	154	230	57	380	305	40
175	684	508	178	220	133	175	~550	180	270	57	450	350	50
200	763	564	203	246	152	200	~600	205	320	60	500	392	65
250	933	679	254	296	190	250	~650	257	350	64	550	482	80

Measurements can be changed without prior notice. Note! Stated weight is excluding motor.

Positions.



Viewed from the drive side.