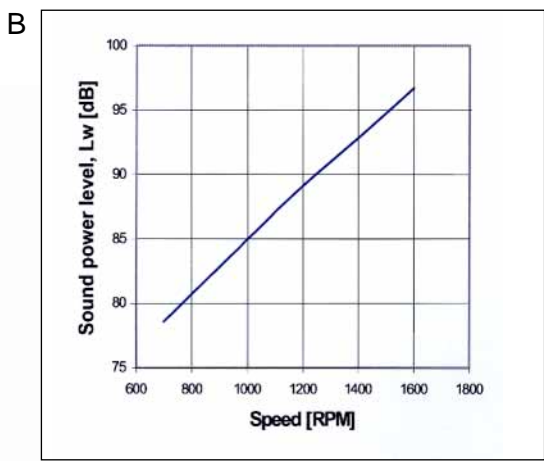
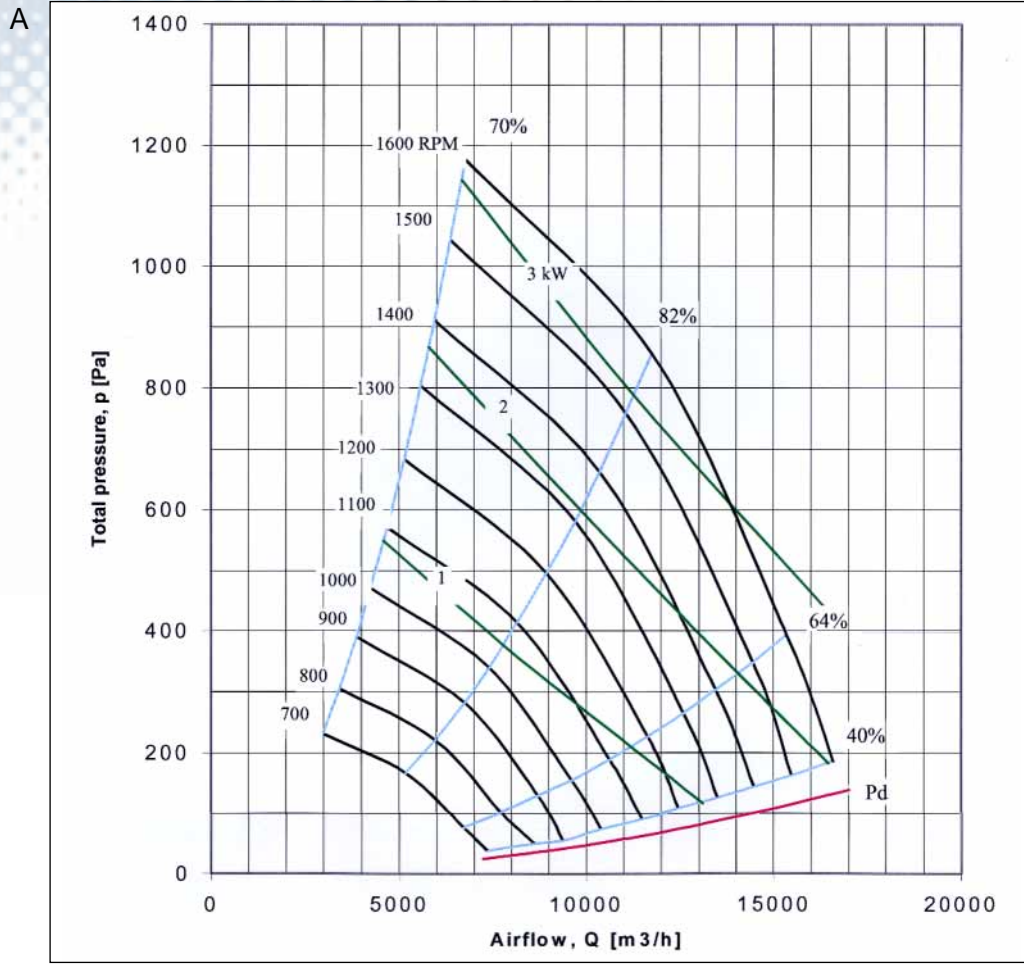


# - BIL 630 A -

## Capacity & sound data

Standard motorpower at 50Hz and 1440 RPM, 4.0kW



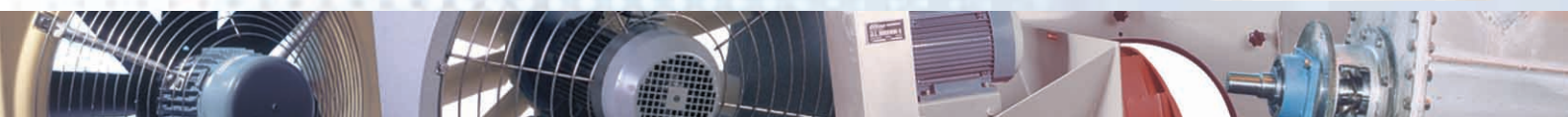
C

Octave band conversion								
RPM	63	125	250	500	1000	2000	4000	8000
700	-4	-9	-16	-6	-16	-21	-11	-9
800	-3	-10	-15	-5	-15	-19	-11	-11
900	-3	-12	-15	-5	-14	-17	-11	-13
1000	-3	-13	-15	-5	-14	-16	-12	-15
1100	-3	-13	-14	-5	-13	-15	-13	-16
1200	-3	-14	-13	-5	-12	-15	-14	-18
1300	-3	-14	-12	-5	-12	-15	-15	-19
1400	-3	-14	-11	-6	-12	-15	-16	-21
1500	-3	-14	-10	-5	-12	-15	-17	-22
1600	-4	-14	-10	-4	-12	-16	-18	-24

D

Sound pressure free field, LpA (dB)			
RPM	1m	3m	5m
1600	72	67	66
1400	68	63	61
1000	62	59	56
700	60	55	52

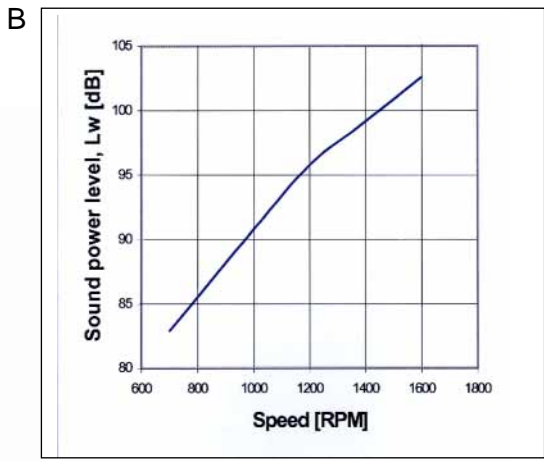
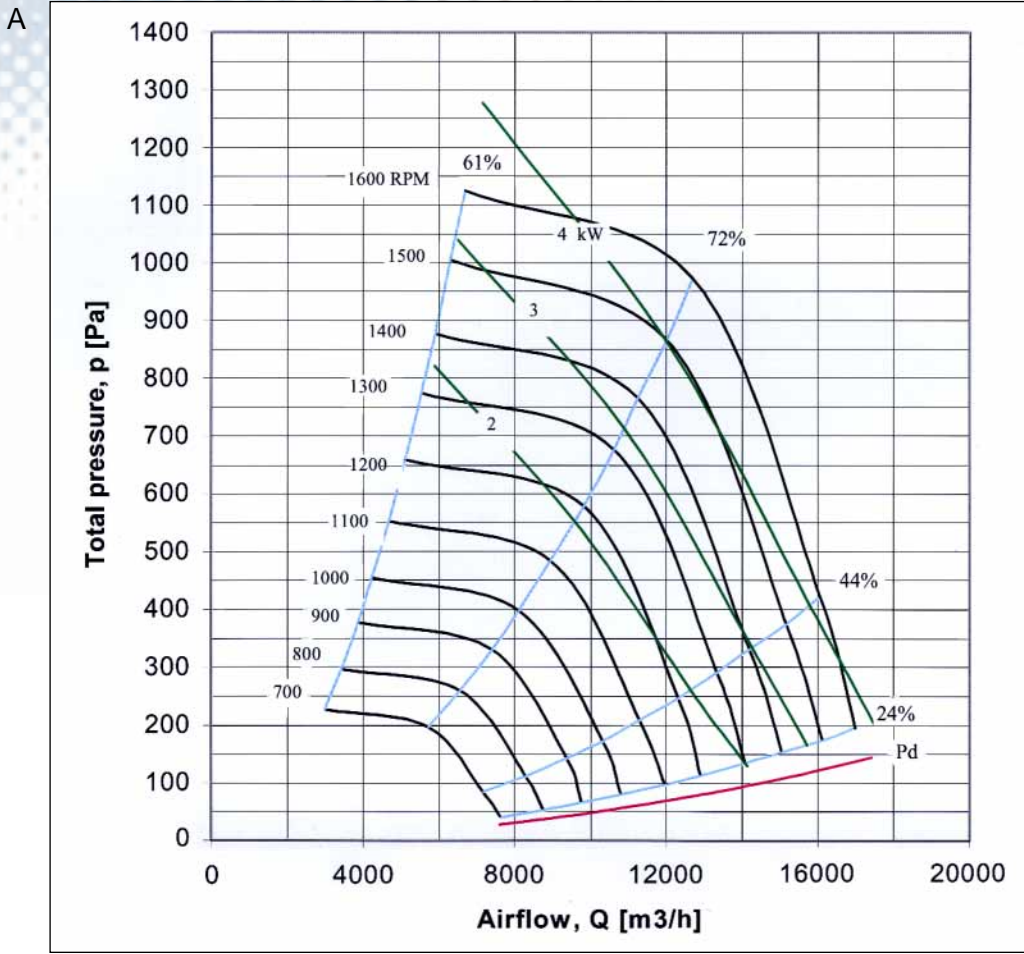
The graph above gives the sound power level,  $L_w$  [dB, ref.  $10^{-12}$  W], in-duct at the highest efficiency. Go to the diagram at right and make corrections at the different frequency bands. The fan test is according to ISO/CD 5136. JLB fanlab. 01.06.01 S.J



# - BIL 630 B -

## Capacity & sound data

Standard motorpower at 50Hz and 1440 RPM, 4.0kW



C

RPM	Octave band conversion							
	63	125	250	500	1000	2000	4000	8000
700	-3	-8	-13	-7	-12	-20	-16	-16
800	-3	-9	-13	-6	-11	-18	-17	-18
900	-3	-10	-13	-5	-11	-17	-18	-20
1000	-4	-12	-13	-5	-11	-16	-19	-22
1100	-4	-12	-13	-4	-10	-15	-19	-23
1200	-4	-13	-13	-4	-10	-15	-20	-25
1300	-4	-13	-12	-4	-10	-14	-20	-25
1400	-5	-13	-11	-4	-10	-14	-20	-26
1500	-5	-13	-10	-4	-10	-13	-20	-26
1600	-6	-14	-10	-4	-10	-13	-20	-27

D

RPM	Sound pressure free field, LpA (dB)		
	1m	3m	5m
1600	79	74	72
1400	76	71	69
1000	69	64	61
700	62	57	54

The graph above gives the sound power level,  $L_w$  [dB, ref.  $10^{-12}$  W], in-duct at the highest efficiency. Go to the diagram at right and make corrections at the different frequency bands. The fan test is according to ISO/CD 5136. JLB fanlab. 01.06.01 S.J

