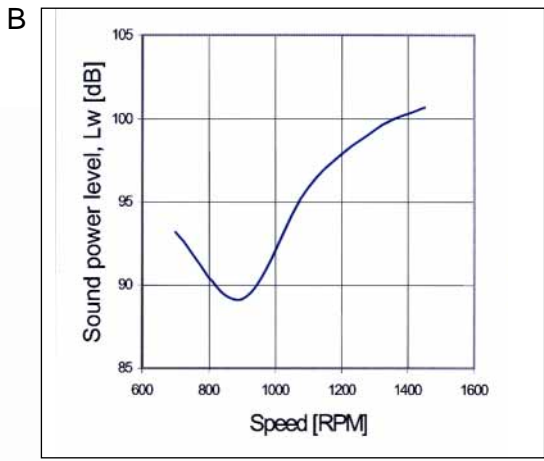
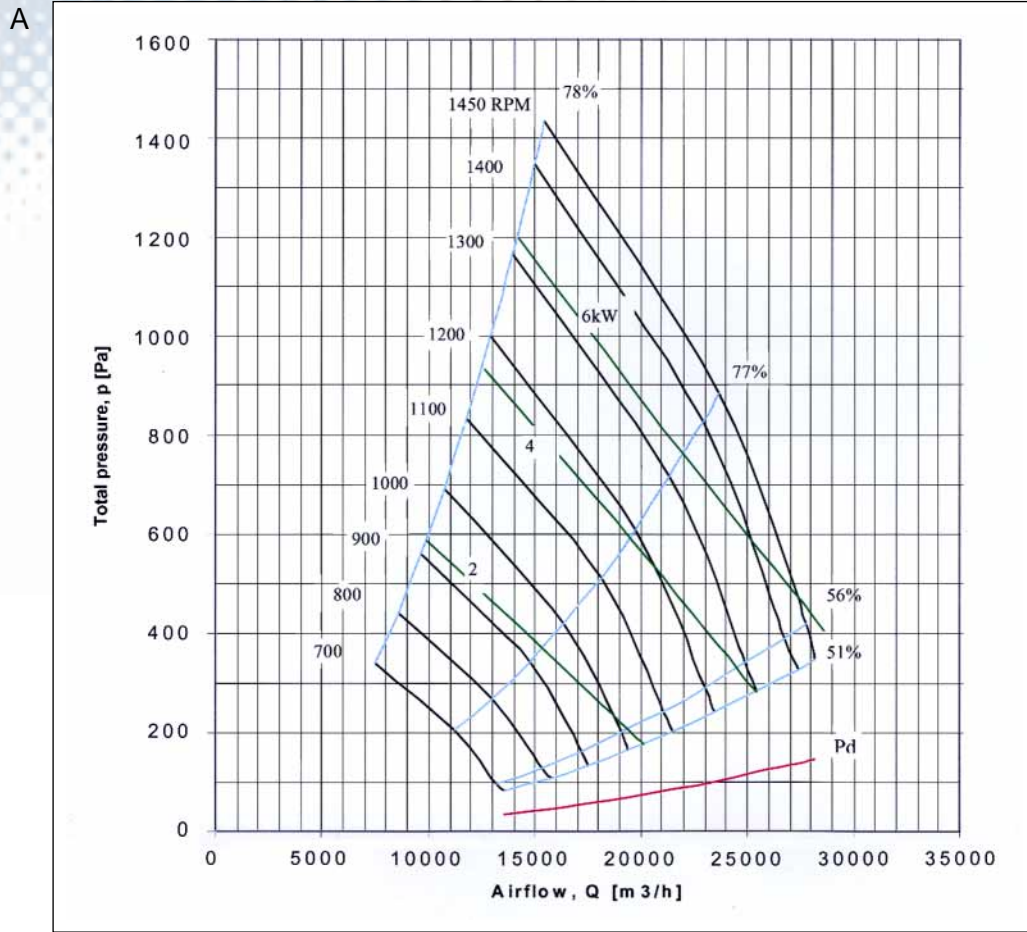


# - BIL 800 A -

## Capacity & sound data

Standard motorpower at 50Hz and 1440 RPM, 7.5kW



C

RPM	Octave band conversion							
	63	125	250	500	1000	2000	4000	8000
700	-15	-16	-18	0	-26	-33	-30	-27
800	-10	-13	-14	-2	-20	-27	-25	-24
900	-5	-10	-10	-4	-15	-22	-21	-22
1000	-6	-11	-9	-3	-15	-22	-23	-25
1100	-8	-13	-9	-2	-15	-23	-25	-29
1200	-7	-13	-7	-2	-13	-22	-24	-30
1300	-7	-13	-6	-3	-12	-21	-24	-31
1400	-7	-12	-5	-4	-11	-20	-24	-31
1450	-7	-12	-5	-6	-11	-19	-24	-31

D

RPM	Sound pressure free field, LpA (dB)		
	1m	3m	5m
1450	71	67	64
1300	69	64	62
1000	63	58	56
700	57	55	51

The graph above gives the sound power level,  $L_w$  [dB, ref.  $10^{-12}$  W], in-duct at the highest efficiency. Go to the diagram at right and make corrections at the different frequency bands. The fan test is according to ISO/CD 5136. JLB fanlab. 01.06.01 S.J

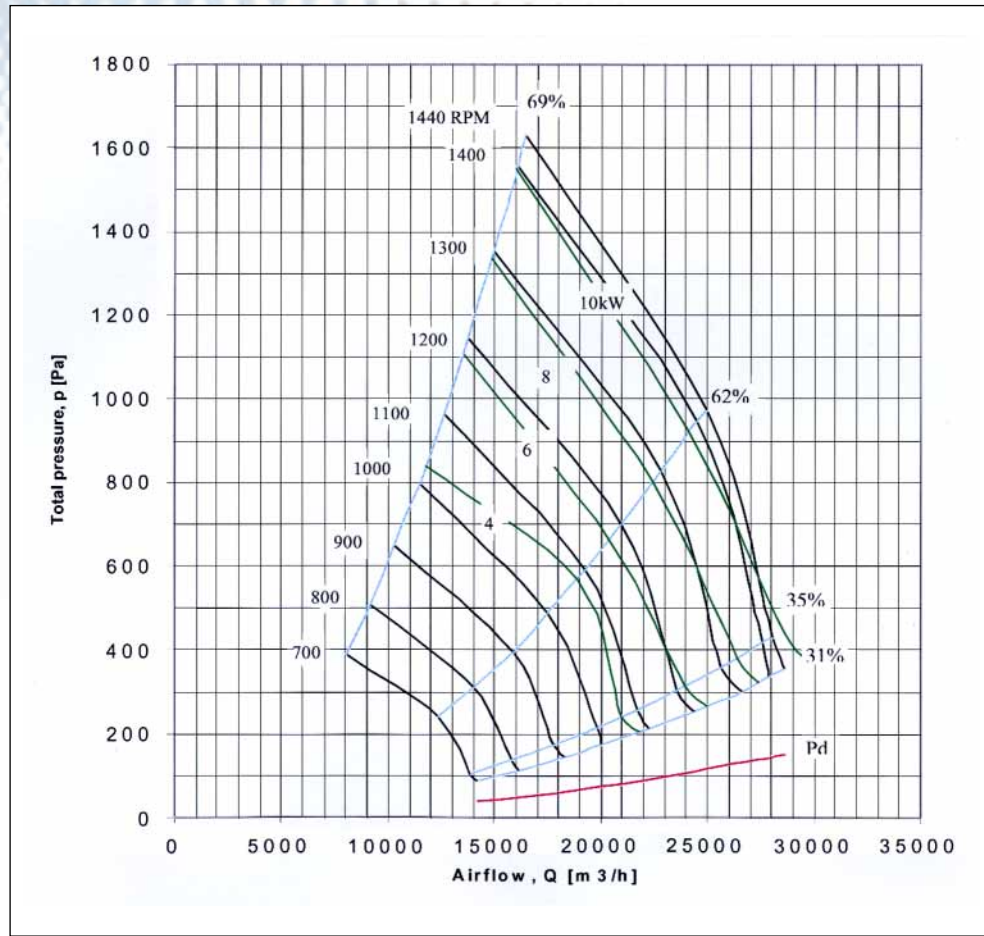


# - BIL 800 B -

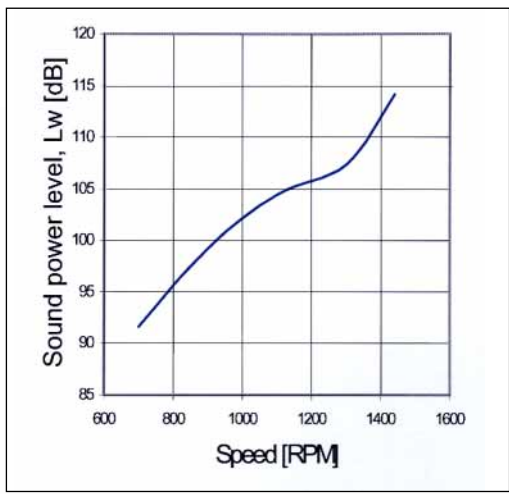
## Capacity & sound data

Standard motorpower at 50Hz and 1445 RPM, 11 kW

A



B



C

Octave band conversion								
RPM	63	125	250	500	1000	2000	4000	8000
700	-9	-11	-2	-9	-15	-23	-20	-21
800	-10	-13	-1	-9	-15	-23	-22	-25
900	-12	-15	-1	-10	-15	-23	-24	-31
1000	-12	-16	-1	-10	-15	-22	-25	-33
1100	-12	-18	-1	-11	-15	-22	-26	-36
1200	-11	-17	-1	-10	-14	-20	-25	-36
1300	-11	-16	-2	-9	-13	-19	-25	-36
1400	-13	-18	-1	-11	-15	-21	-27	-38
1440	-16	-21	-1	-13	-17	-23	-30	-41

D

Sound pressure free field, LpA (dB)			
RPM	1m	3m	5m
1440	84	77	74
1300	77	73	70
1000	70	67	63
700	63	59	56

The graph above gives the sound power level,  $L_w$  [dB, ref.  $10^{-12}$  W], in-duct at the highest efficiency. Go to the diagram at right and make corrections at the different frequency bands. The fan test is according to ISO/CD 5136. JLB fanlab. 01.06.01 S.J

