

N
Lreg

MODBUS REGISTER MAPS

INPUT REGISTERS (Read-only)						
		Data type	Description	Data	Values	
1	Temperature input	unsigned int.	Analogue temperature input	0—600	0 =	0,0 °C 600 = 60,0 °C
2	Vmax	unsigned int.	Max. motor speed value	170—230	170 = 230 =	170 VAC 230 VAC
3	Vmin	unsigned int.	Min. motor speed value	80—160	80 = 160 =	80 VAC 160 VAC
4	Output voltage	unsigned int.	Current output voltage	0,80—230	0 = 80 = 230 =	0 VAC 80 VAC 230 VAC
5	Temperature setpoint	unsigned int.	Temperature setpoint value	50—350	50 = 350 =	5,0 °C 35,0 °C
6	Proportional range	unsigned int.	Proportional temperature value	1—4	1 = 2 = 3 = 4 =	2 °C 4 °C 6 °C 8 °C
7	Hysteresis	unsigned int.	Hysteresis value	1—4	1 = 2 = 3 = 4 =	0,5 °C 1 °C 2 °C 3 °C
8	Off level	unsigned int.	Off level value	0, 1	0 = 1 =	OFF ON
9	Sensor status	unsigned int.	Analogue input sensor status	0, 1	0 = 1 =	Connected Disconnected
10—11			Reserved, Return '0'			

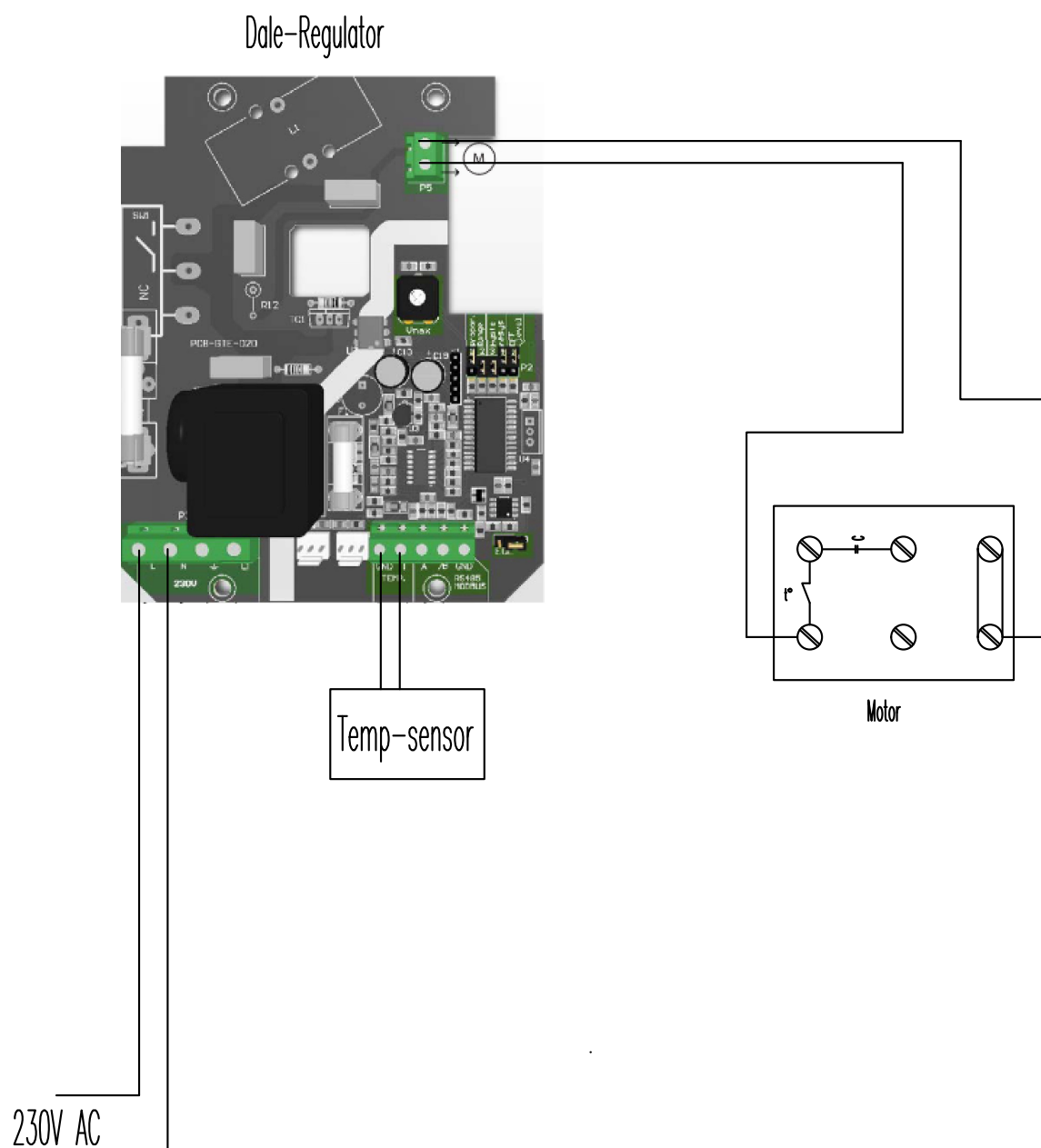
Notat: Inngangs registeret kan leses via Modbus kommando: "Read input registers".

HOLDING REGISTERS (Read/write)						
	Address	Data type	Description	Data	Default	Values
1	Address	unsigned int.	Modbus device address	1—247	1	
2	Modbus baud rate	unsigned int.	Modbus communication baud rate	1—4	2	1 = 9.600 2 = 19.200 3 = 38.400 4 = 57.600
3	Modbus parity mode	unsigned int.	Parity check mode	0—2	1	0 = 8N1 1 = 8E1 2 = 8O1
4	Device type	unsigned int.	Device type (Read only)	GTE-1-60-DM=3003		
5	HW version	unsigned int.	Hardware version of the device (Read only)	200		0 x 0200 = HW version 2.00
6	SW version	unsigned int.	Software version of the device (Read only)	220		0 x 220 = SW version 2.20
7	Operating mode	unsigned int.	Mode of operation	0—1	0	0 = Standalone mode 1 = Modbus mode
8	Output overwrite	unsigned int.	Output overwrite mode	0—1	0	0 = Disabled 1 = Enabled
9-10			Reserved, return '0'			
11	Vmax	unsigned int.	Max. motor speed value	170—230	230	170 = 170 VAC 230 = 230 VAC
12	Vmin	unsigned int.	Min. motor speed value	80—160	80	80 = 80 VAC 160 = 160 VAC
13	Temperature setpoint	unsigned int.	Temperature setpoint value	50—350	150	50 = 5,0 °C 350 = 35,0 °C
14	Proportional range	unsigned int.	Proportional range value	1—4	2	1 = 2 °C 2 = 4 °C 3 = 6 °C 4 = 8 °C
15	Hysteresis	unsigned int.	Hysteresis value	1—4	3	1 = 0,5 °C 2 = 1 °C 3 = 2 °C 4 = 3 °C
16	Off level	unsigned int.	Off level value	0—1	0	0 = OFF 1 = ON
17	Modbus time-out control	unsigned int.	Modbus time-out control value	0—1	0	0 = Disabled 1 = Enabled
18	Modbus time-out	unsigned int.	Modbus time-out value	0—60	1	1 = 1 min 60 = 60 min.
19	Vout	unsigned int.	Set override output voltage	0,80—230	0	0 = 0 VAC 80 = 80 VAC 230 = 230 VAC
20			Reserved, returns '0'			

Notat: Registeret kan bearbejdes via følgende Modbus kommandoer: "Read Holding Registers", "Write Single Register" or "Write Multiple Registers".

Vil du finne ut mer om Modbus, besøk nettsiden: http://www.modbus.org/docs/Modbus_over_serial_line_V1_02.pdf

Advarsel: Denne koblingen er ikke godkjent for husdyrrom!
I husdyrrom kreves manuell reset på termokontakt. Se bruvik.no hvis du trenger et annet koblingsskjema.



Ønskes viftestans må jumper nr. 5 "Level off"
settes PÅ.