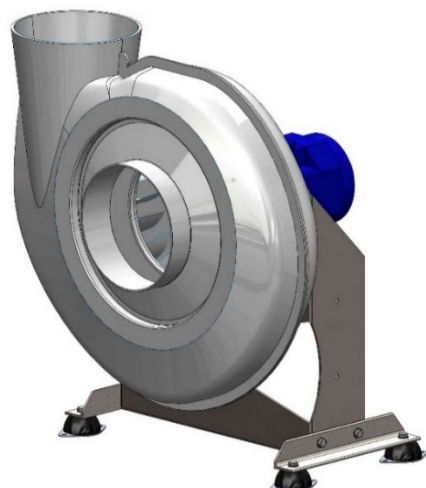


B-CHEM Arr.4 Direct driven



The plastic hood is suitable for use in:

- Acidic atmosphere
- Battery charging rooms
- Laboratory extract
- Chemical industry
- Photo industry
- Renovation halls

Single extraction fan with rotor and house molded in PP plastic material. Motor base in acid proof steel. Comes with 3 phase industrial motors, but can also be offered with spark proof / explosion proof motors for direct drive. Available in direct-driven and belt-driven design.

Dimension sketch

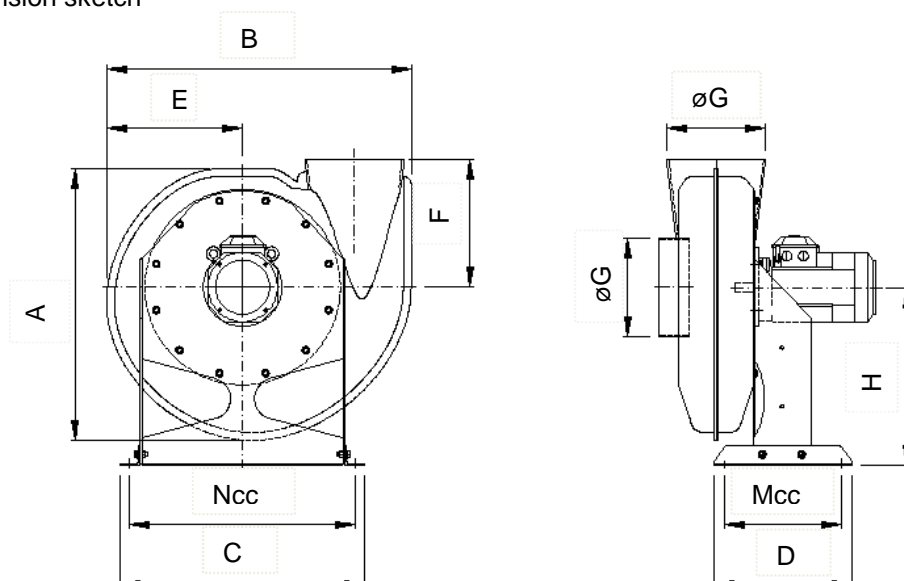
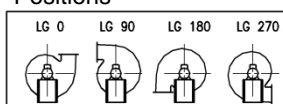


Table of dimensions

Type	A	B	C	D	E	F	N cc	M cc	H	ø G	Vekt, kg
125	335	389	342	294	174	168	302	256	230	125	23
160	429	497	412	320	223	215	372	282	291	160	38
180	483	560	454	350	251	242	414	300	331	180	41
200	537	622	495	350	279	269	455	300	364	200	43
250	575	703	618	350	324	320	568	300	454	250	55
315	790	930	707	400	410	404	657	350	529	315	82
400	857	1003	771	450	447	508	721	400	557	400	125

Measurements can be changed without prior notice. Note! Stated weight is excluding motor.

Positions



Viewed from the drive side